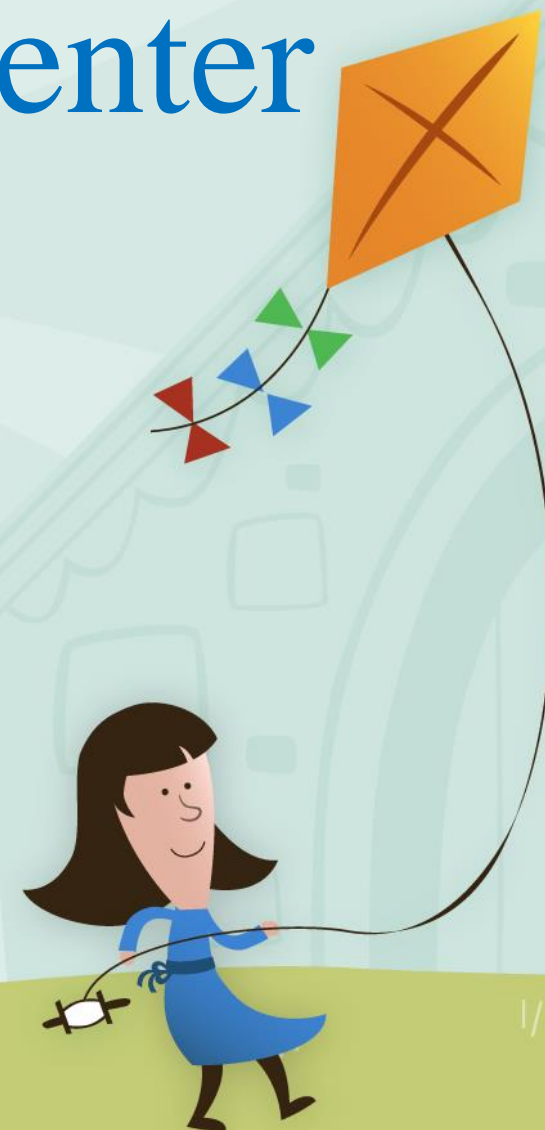


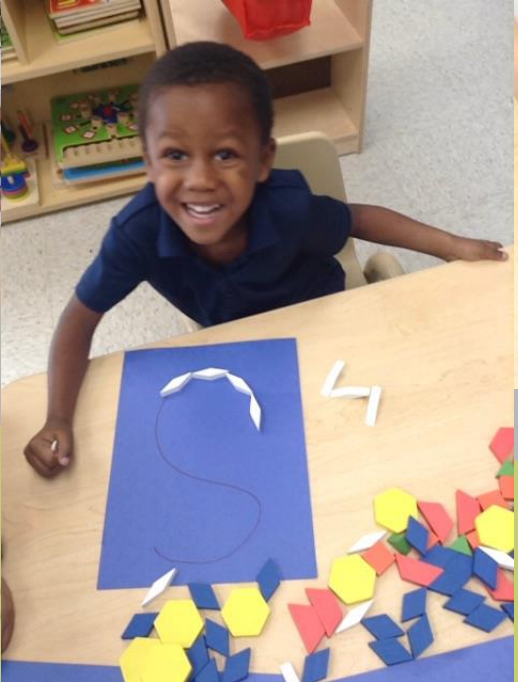
# Moody Early Childhood Center

Fourth Quarterly Report

August 2022



# Student Enrollment





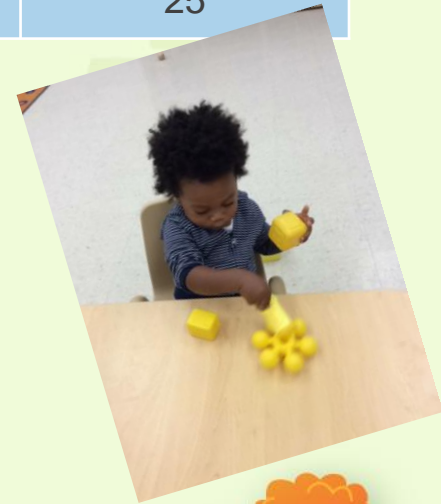


Classrooms	Ages	Number of Classrooms	Enrollment
Infants	6 wks-23 months	6	41
Toddlers	24 months-36 months	5	52
PreK3	3-4 years	11	128
PreK4	4-5 years	1	6
Afterschool	PK3-Kdg	3	25

Demographic	Infant & Toddler	PK
Hispanic	25%	43%
AA	11%	32%
Caucasian	56%	19%
Other	9%	6%
SES	59%	87%
Full Pay	41%	13%



*Help us recruit!*  
*Spaces are available!!*



# Staff Demographic and Certification

Ethnicity	Percentage
Hispanic	32%
African American	31%
Caucasian	27%
Other	1%

Degree	GED/HS	CDA	Asso	Bach	Bach – Alt Cert	Bach +Cert	Masters +
#	22	9	5	13	1	10	6
%	33%	14%	7%	20%	4%	15%	9%



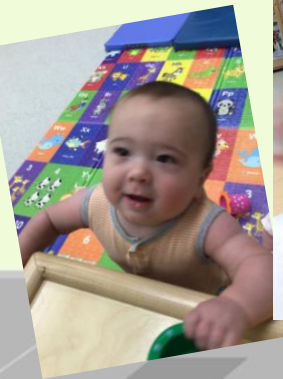


# Academics



# Infant/Toddler Developmental Checklist

Age	6 wks – 5 months				6 - 11 months				12 - 17 months				18 - 23 months				24 - 36 months				36 months+			
	Dec	Jan	Apr	Jul	Dec	Jan	Apr	Jul	Dec	Jan	Apr	Jul	Dec	Jan	Apr	Jul	Dec	Jan	Apr	Jul	Dec	Jan	Apr	Jul
<b>Health &amp; Motor</b>	80	50	0	75	100	86	100	83	85	77	83	36	62	90	50	62	15	46	61	79	58	64	73	77
<b>Lang &amp; Lit</b>	100	0	0	75	50	86	100	75	77	46	53	27	23	30	48	23	8	8	18	63	69	70	75	50
<b>Social Emotion</b>	80	50	100	100	60	86	100	92	100	85	92	45	54	70	80	62	92	85	86	79	73	73	83	80
<b>Cognitive</b>	80	50	75	100	70	86	100	92	85	77	85	27	38	50	60	15	54	85	88	79	54	59	63	77
<b>Overall</b>	100	0	0	75	50	86	100	83	77	69	62	27	38	40	50	31	8	15	38	74	65	69	75	63



# PK3 – Academic Assessment

Skills Assessed	1 <sup>st</sup> Assessment	2 <sup>nd</sup> Assessment	3 <sup>rd</sup> Assessment	EOY	New Students	Returning Students
Capital Letter (10)	25%	46%	84%	92%	90%	100%
Lower Case (10)	18%	35%	78%	86%	83%	100%
Number (1-5)	26%	46%	82%	85%	82%	100%
Rote Counting (1-15)	9%	37%	85%	88%	87%	94%
Colors (11)	34%	53%	84%	90%	88%	100%
Shapes (6)	32%	66%	94%	98%	88%	100%





# PK4 – Academic Assessment

Skills Assessed	1 <sup>st</sup> Assessment	2 <sup>nd</sup> Assessment	3 <sup>rd</sup> Assessment	EOY	New Students	Returning Students
Capital Letter (20)	75%	86%	100%	100%	-%	100%
Lower Case (20)	63%	86%	100%	100%	-%	100%
Number (1-10)	50%	86%	100%	100%	-%	100%
Rote Counting (1-30)	38%	86%	100%	100%	-%	100%
Colors (11)	75%	86%	100%	100%	-%	100%
Shapes (6)	75%	71%	100%	100%	-%	100%

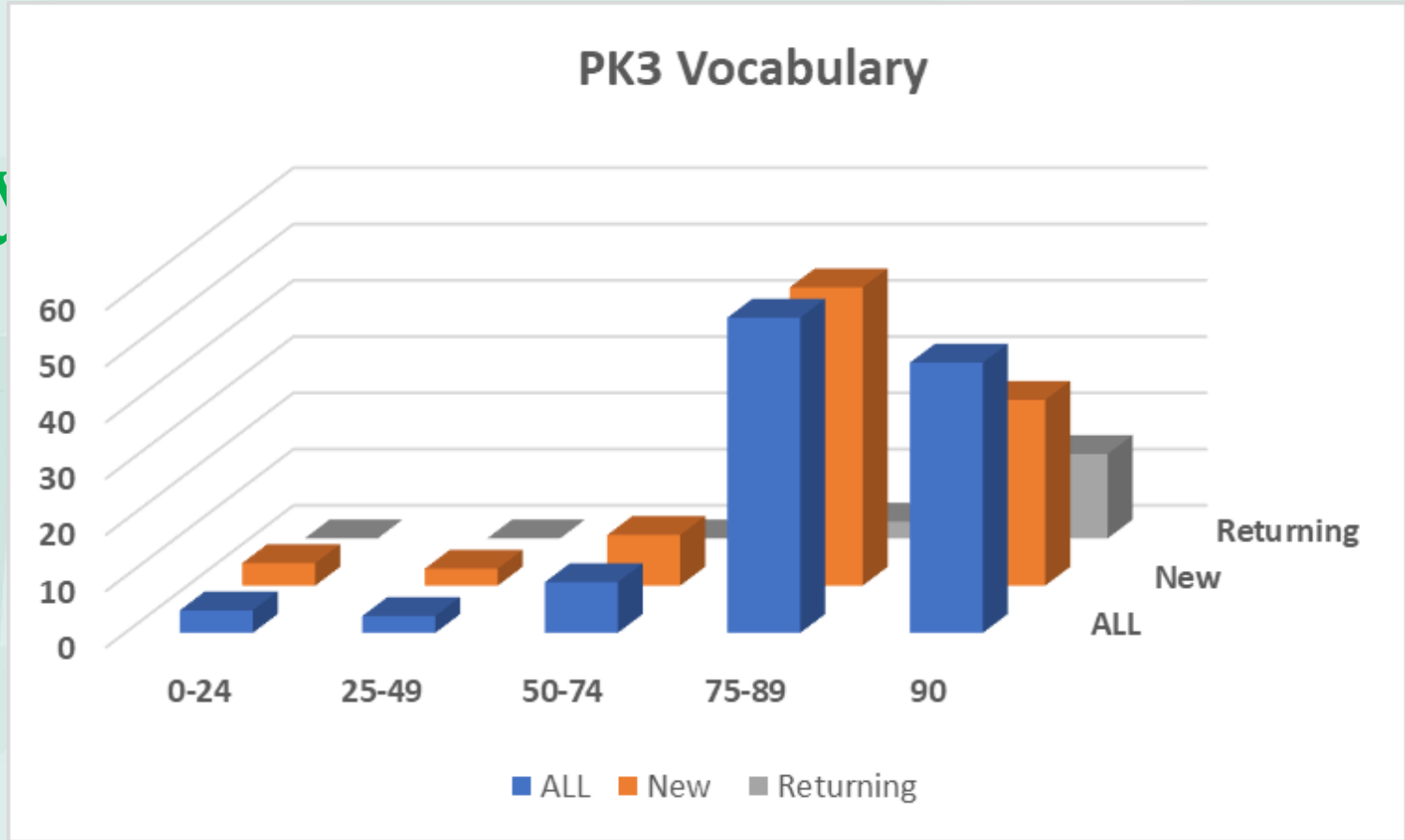




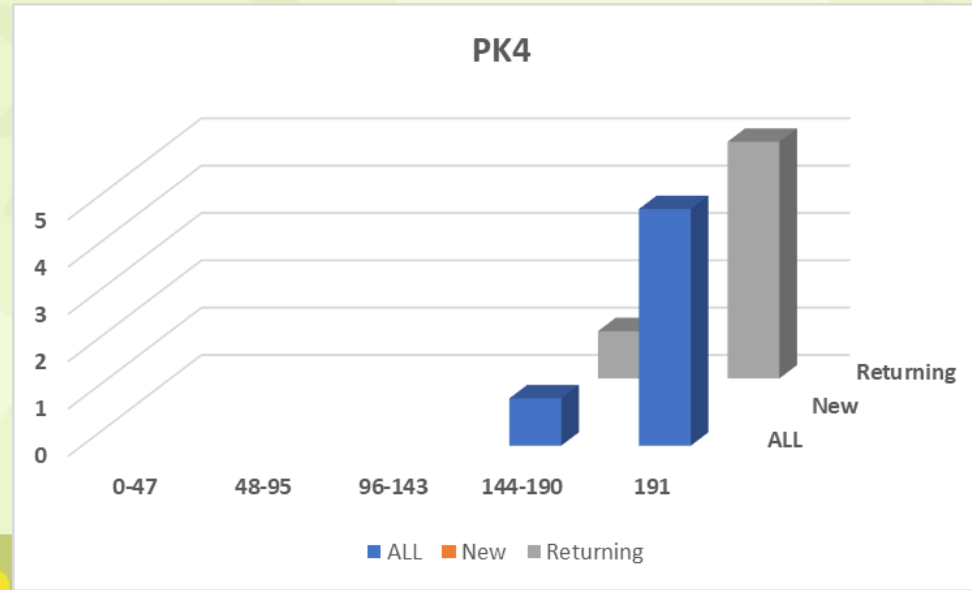
# PK3 Vocabulary

**Met 80%**

90% All  
88% New  
100% Returning



# PK4 Vocabulary



# Financial Reporting Goals





Financial Reporting Measures		2021-2022	2022-2023	2023-2024	2024-2025
#1a	Annual independent financial report meets expectations outlined in Texas Administrative Code §109.23 (relating to school district independent audits and agreed-upon procedures)	Feb 2022			
#1ai	The annual independent audit must provide an audited balance sheet or Statement of Financial Position to district authorizers.	Feb 2022			
#1aii	The annual independent audit must provide an audited income statement or Statement of Activities and Changes in New Assets to district authorizers.	Feb 2022			
#1aiii	The annual independent audit must provide an audited statement of cash flows to district authorizers.	Feb 2022			
#1aiv	The annual independent audit must provide notes to the audited financial statements to district authorizers.	Feb 2022			
#1av	The annual independent audit must provide charter school board-approved budget with enrollment targets to district authorizers.	Feb 2022			
#1avi	The annual independent audit must provide an annual debt schedule indicating the total principal and interest due to district authorizers.	Feb 2022			
#1b	The Operating Partner shall obtain an unqualified audit opinion, in connection with the annual financial report.	Feb 2022			
#1c	The Operating Partner must operate within available funding, and any budget variances must be addressed by modification of spending plans and practices.	Feb 2022			
#1d	The Operating Partner will have a minimum of 30 days Cash on Hand.	Feb 2022			



# Community Partnerships

\*New in 2021-2022



- Galveston ISD
  - Ball High School
- United Way
- Teen Health



- Urban Strategies
- Boys and Girls Club
- WorkSource Solutions
- Galveston Urban Ministries
- Family Service Center



- UTMB
- SMART Family Literacy
- Area Childcare Directors
- Galveston Diaper Bank



- BBVA
- **Moody Bank**
- Gulf Breeze



- Galveston Own Farmer's Market
- Steals and Deals
- Galveston Houston Immigration Representation Project (GHIRP)

- Galveston Food Bank
- St. Vincent's House
- Ironman
- Galveston Children's Museum



- **WIC**



- **Texas Children in Nature**



Questions???

Comments???

Betty Massey, Board President

Karin Miller, Executive Director (409) 761-6932

Antonio Ford, Deputy Executive Director (409) 761-6936

